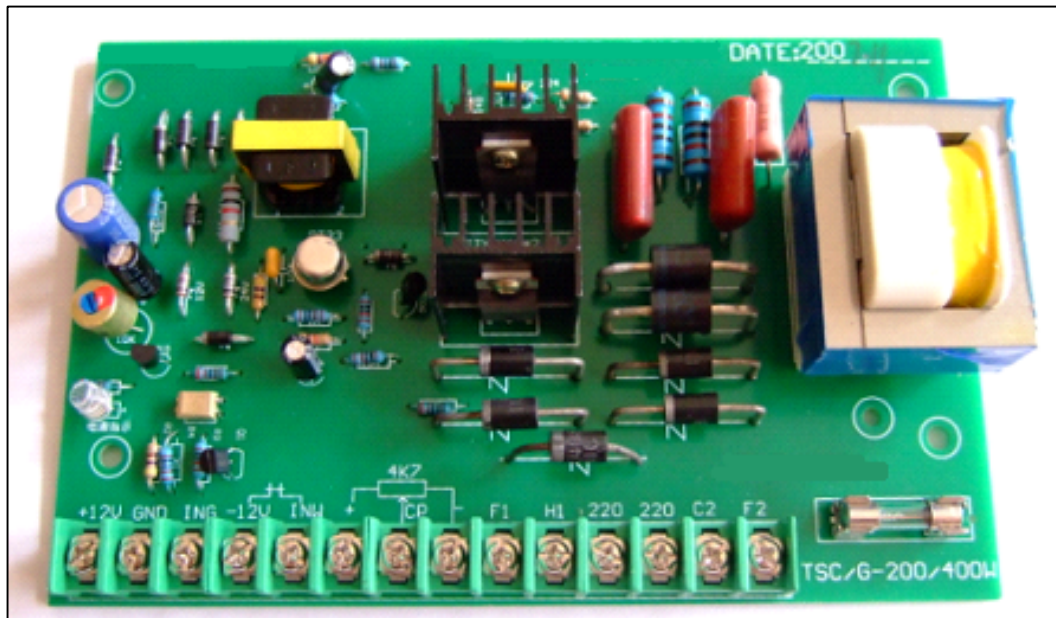


# TSC/G -200/400W Series DC Motor Control Board

## Operation manual



Thanks for using our factory TSC/G-200/400W DC motor control Board made in china.

Before using of the control Board, please read this instruction carefully and understand the correct methods of operation.

## **Introduction**

TSC/G-200/400W SCR DC motor speed control board is replaced by two board TSC-200/400W and TSCG-200/400W integrated board, with small size, ease of installation, speed control of high precision, Advantage of low prices, widely used in electrical wiring, cables, light industry, textile, paper, chemicals, printing and dyeing, metallurgy, rubber and plastics, drawing, extruding machinery, medical equipment, food production, printing and packaging, and other industries, and And the permanent magnet, he stimulated and stimulated, stimulated string supporting the use of DC motor.

The Electrical and Mechanical hub for small DC power supply to achieve constant torque motor stepless speed regulation. The main circuit devices using single-phase half-bridge circuit with a voltage of negative feedback, such as links, increase the speed precision, control circuits used in-hand trigger transistors, circuits simple lines, the stable and reliable, stable performance and temperature compensation.

Can be an external control include: displacement controller, photoelectric switch.

## **parameters**

- 1, for long-term work system
- 2, the normal operating voltage: 220 V ( $\pm 10\%$ )
- 3, output current: 3 A
- 4, Speed: 1:10
- 5, static accuracy: 5%
- 6, Electric Power Adapter: 50 W-400W
- 7, armature output voltage: DC0-220V
- 8, excitation output voltage: DC200V/1A
- 9, Dimension (L  $\times$  W  $\times$  H): 162  $\times$  100  $\times$  55mm
- 10, wiring: Video

## **installation notes**

- 1, users in the use of this product, should carefully read the statement.
- 2, do not install the high-temperature, high humidity environment.
- 3, please do not installed in the wood and other flammable materials.
- 4, do not install the machines in high-vibration equipment.
- 5, please do not installed on a fuel-air, dust, a flammable gas environment.
- 6, control panels and the installation of electrical conductors, be sure to maintain.

## **Features**

- 1, with SCR trigger achieve stepless speed regulation.
- 2, the introduction of negative feedback voltage technology to speed more stable.
- 3, with a flexible multi-functional interface

## **After-sales service**

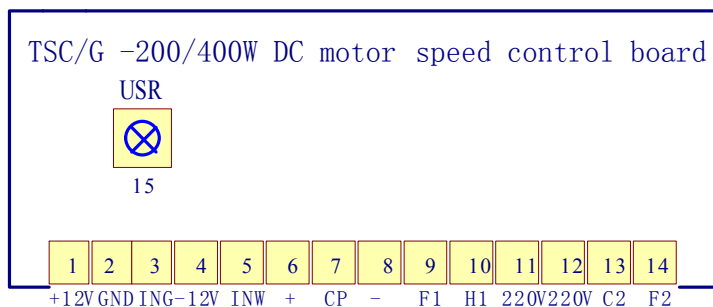
- 1, a year from the date of purchase, from factory to provide free maintenance service.
- 2, way to get my warranty, that is, the user should be sent to the factory maintenance products.
- 3, more than the warranty period of products, such as the need to replace parts and components, parts and components appli-cable nominal fee.
- 4, all man-made damage, not a warranty, but may be sent to the factory maintenance.

For example:

- (1) not to use products that require installation of the damage caused;
  - (2) the damage caused by force majeure.
- 5, SCR, rectifier diode does not belong to the scope of the warranty

# Speed on board and instruction

## 1. TSC/G-200/400W DC motor speed control on board



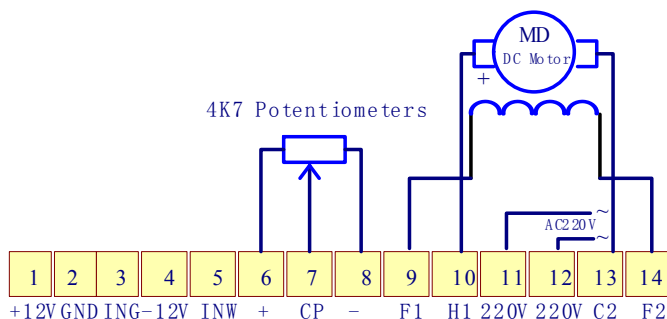
- (1) +12 V: DC1W is power; (2) GND: DC1W negative power supply;
- (3) ING: photoelectric switch signal input; (4) -12V: negative displacement controller;
- (5) INW: displacement input signal controller (6) 10: low-speed adjustment;
- (7) CP: speed of adjustment (8) 1: high-speed adjustment;
- (9,14) F1, F2: DC motor excitation; (10,13) H1, C2: DC electrical and mechanical drive;
- (11,12) 220V: AC220V 50HZ power input .
- (15) USR: voltage regulator for the fine-tuning potential, rotating clockwise direction, speed increased the contrary, the speed dropped. At the factory, have been adjusted in the electrical work under the maximum 220 V position, not arbitrary adjustments.

## 2. TSC/G-200/400W DC motor speed control board wiring and description

(1), direct Speed Method

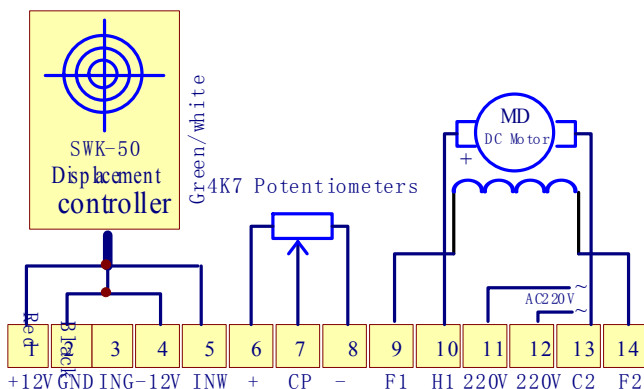
Connection: - High-speed access for potential client, + access for low-potential, CP-conditioning to potential client.

4K7 Potentiometers: WH118-I 2W, WX111 (030) 3W lap potential or WXD3-12 multi-turn potentiometer (Choose one)



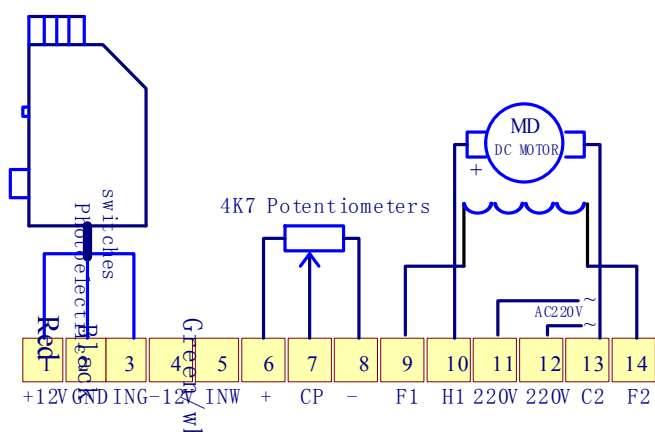
(2)、Displacement Controller

Wiring: +12V displacement controller to the red line, GND and -12V displacement controller connected black line, INW displacement controller white lines to the Green Line or the output signal (white lines: block to speed up the work in full swing; Green Line: Decelerating to stop blocking the work).



### (3)、Photoelectric switches control

Wiring (1): +12V photoelectric switch to the red line, GND photoelectric switch to black line, ING photoelectric switch to white lines or the Green Line (white lines: blocking the work of the Green Line: to stop blocking the work).



## About Us

The factory is a hi-tech electronic product design, development, manufacture, production and sales of professional enterprises. Major production and sales of various industrial equipment. Widely used in packaging machinery, plastics machinery, electrical machinery, printing machinery. Not only has a factory in the research, development, manufacturing, marketing and management are highly experienced technical team, but also the advanced test conditions and test equipment in the country's motor control in a peer-leading position. Companies rely on high-quality staff, advanced production tools and testing equipment, to provide users with high-quality, high reliability of the first-class products and excellent service, product provinces and cities all over the country, some products are also exported abroad.

The factory has strong technical force and good service, customers get the trust and praise.

The main products are:

DCZLY Series DC motor coiling tension (Control) controller (board)

DC, TS, TSB, TSG, TSBG series DC motor speed control board

RTS, RTSG series for DC motor control

LJKY series torque motor controller (board)

ZLMK series of manual control panel tension

SZK Manual Tension Controller

US Digital Tension automatic controller

ZXT series of constant tension controller

SWK series displacement controller

HSK series of two-speed controller Hall

ZX series of counters

GK series photoelectric switch corrective controllers

Distribution:

Chau says unlicensed motor series, Wanjia licensing torque motor series, the dragon licensing photoelectric switch series, as well as packaging, plastics, printing machinery, and other ancillary products and electronic accessories.